



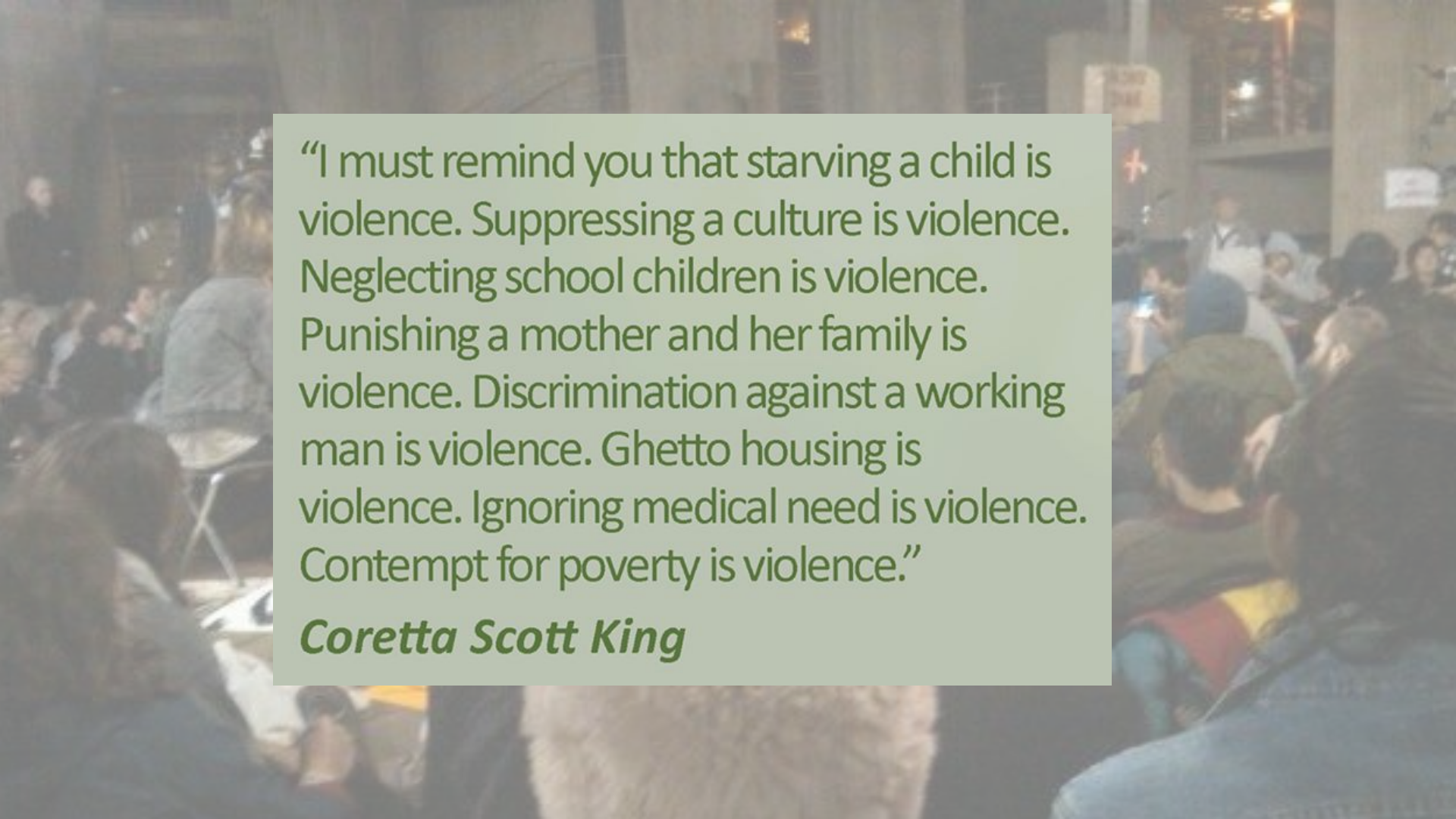
Cannabis as a vegetable?

New approaches to an old friend.

Brandie M Cross, PhD
Abilities Expo 2019



SMART PHARM
RESEARCH GROUP



“I must remind you that starving a child is violence. Suppressing a culture is violence. Neglecting school children is violence. Punishing a mother and her family is violence. Discrimination against a working man is violence. Ghetto housing is violence. Ignoring medical need is violence. Contempt for poverty is violence.”

Coretta Scott King



Science is political.

From Occupying Wall St. to Occupying the Wall St. Journal...

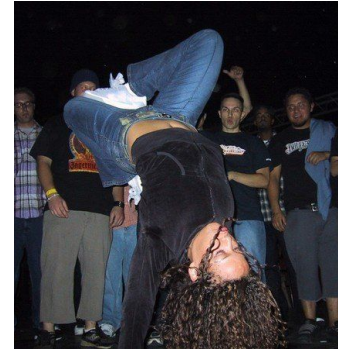
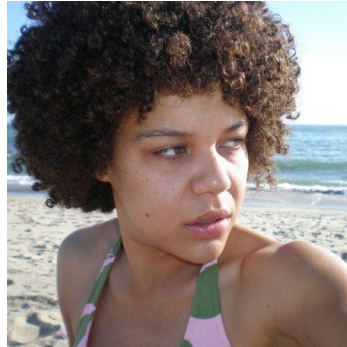
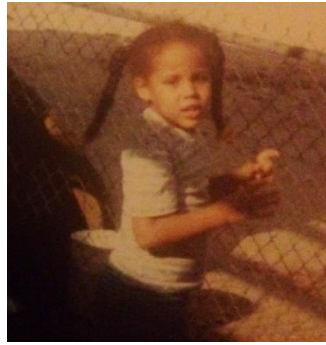


Who am I?

One individual with several intersectionalities...



California State University
Northridge



***Cannabis* is a plant!**

Non-toxic & related to hops and roses.

Hemp and “marijuana” -both considered *Cannabis*

Various types:

- Cannabinoid Composition
- Flavor & Smell (Terpene Composition)
- Leaf Size, Type & Number

US Hemp Bill

- Hemp defined in the USA as:
 - “*Cannabis* having less than 0.3% THC”
- **Raw *Cannabis* plants measure average under 0.1% THC.**



***Cannabis* has been used for thousands of years!**

Every continent

Every people

Every culture

**So why was it *ever* illegal in
the United States?**



***Cannabis* prohibition is founded in racism (not science)**

- Henry Anslinger associated *Cannabis* smoking with Black jazz musicians and Mexican workers.
 - Henry blamed *Cannabis* for crime, insanity and interracial marriage.
 - Henry became the FIRST head of the DEA.
- Ending prohibition now- is very complicated!
- Ending prohibition requires us to look into the science of *Cannabis* deeper.



***Cannabis* is more than THC!**

- Over 90 cannabinoid compounds have been discovered
- Only 1 cannabinoid (THC) gets you “high”.
- Raw *Cannabis* has little to no THC.
- Raw *Cannabis* may be a link to our nutritional history if you think of disease as a nutrient deficiency.
- Raw cannabinoids are 10-20X more effective than THC or CBD.



What is Raw Hemp?

Raw hemp- refers to non-THC containing *Cannabis* which is processed without heat to maintain the natural non-psychoactive properties & deliver micro-nutrients.

- Orally & Sublingually
- Topically
- Omega-rich
- Amino Acid rich



Raw hemp & *Cannabis* can be obtained many ways.



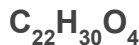
RAW JUICING - EATING (RAW) - RAW (COLD PRESSED) OILS

What is THCA?

- Non-psychoactive cannabinoid in cold-pressed/extracted *Cannabis* strains
- Published scientific studies:
 - Anti-inflammatory (Ruhaak, 2011)
 - Neuroprotective (Moldzio, 2012)
 - Antiemetic (anti-vomiting)(Rock, 2013)
 - Anti-cancer (De Petrocellis, 2013)
 - Low binding efficiency to CB1 AND CB2 receptors
 - Possible inhibition of cellular channels (TRP)
- NOT scheduled by the UN or federally due to its empirical formula and properties.

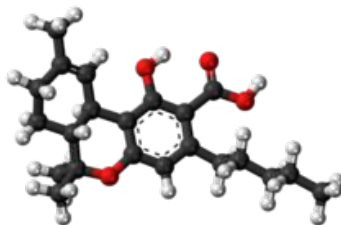
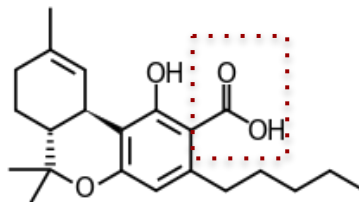
THCA

Formula



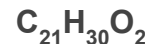
Molar mass

358.4733 g/mol



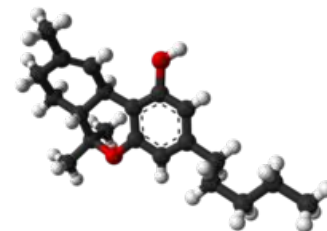
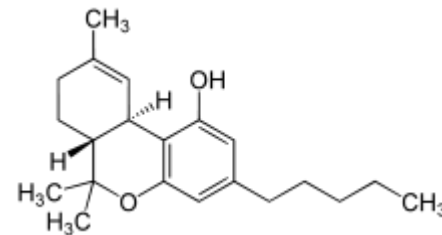
THC

Formula



Molar mass

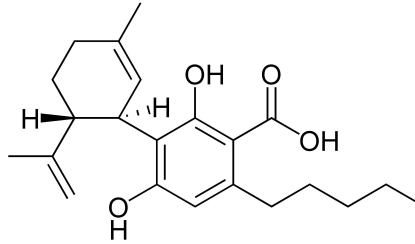
314.469 g/mol



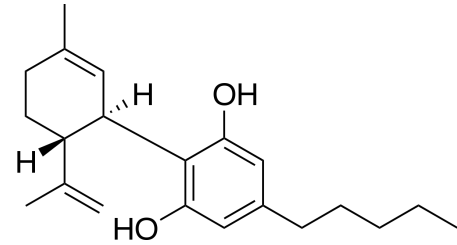
What is CBDA?

- Non-psychoactive cannabinoid in cold-pressed/extracted *Cannabis* strains (hemp-like)
- Not well studied in mainstream science.
- Preliminary studies show:
 - improvement of seizure
 - Improvement for mood disorders and hormone related phenomena.
 - Pain Relief/Anti-inflammatory
- NOT scheduled by the UN or federally due to its empirical formula and properties.

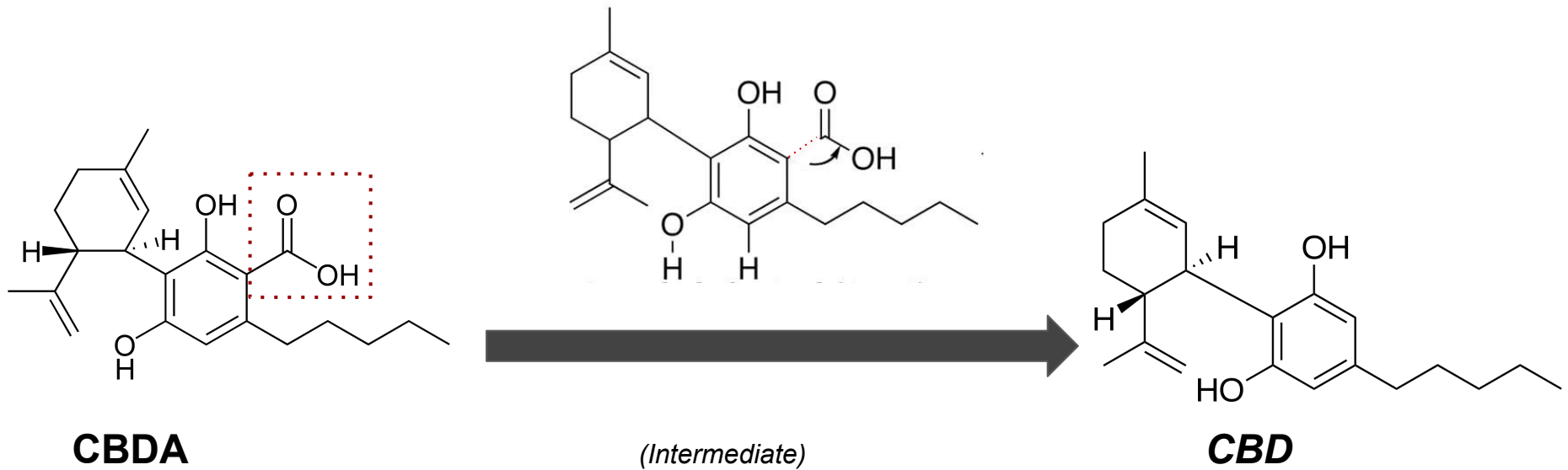
CBDA



CBD



Raw *Cannabis* is not **decarboxylated**.

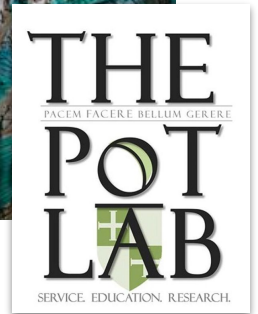


- **Heat** (over 2-300F)
- **UV (Light)** (4hr+ of direct sunlight)

Raw *Cannabis* is therapeutic: The Study

We wanted to know:

- What is raw *Cannabis* useful for?
- How many mgs are required:
 - Per person?
 - Per dose?
 - Per day?
 - Weight vs Age
- What are the differences between THC, CBD and THCA or CBDA?
- How well do raw cannabinoids work?
- Can raw cannabinoids replace/reduce RX medicines?



Raw *Cannabis* is therapeutic: THCA

Clinical studies show:

- 88% Decreased seizure & Spasm (intensity & duration)
- 89% reduced/eliminated Rx drug
- 85% Increased physical coordination
- 81% Increased cognition & focus
- 79% Decreased Pain & Inflammation
- 66% Increased motivation & organization.
- 59% Increased communication.
- Averaged a 90% improvement for multiple (more than 2) symptoms overall.
- Effective dose (children-adult)
 - **2.5-20 mg TOTAL DAILY**
 - **10x more effective than THC**



THCA may replace or reduce dependence on:

- THC regimens- more focused/clarity
- Rx Drugs:
 - Keppra & other AEDs
 - Topomax
 - Lamictal
 - Sleeping pills
 - Muscle Relaxers
 - Anti-depressants/Anti-Anxiety
 - Opiates
 - Extends efficacy while reducing psychotropism (“high”)
 - Reduces overall use & addictive tension.

Raw *Cannabis* is therapeutic: CBDA

Clinical studies show:

- Decreased seizure & Spasm (intensity & duration)
- Increased mood stability
- Decreased Pain & Inflammation
- Decrease in Hormone-Replacement- Therapy (HRT) side-effects
- Effective for women however study was low in males (95% female cohort).
- **20X more effective than CBD**

CBDA may replace or reduce dependence on:

- THC regimens- more focused/clarity
- Rx Drugs:
 - Mood Disorder Drugs
 - Sleeping pills



SIGN UP AT BOOTH #833

Raw *Cannabis* is therapeutic: Mixtures

SYMPATH

Denied Pain Management?

- Study in-progress
- Pain-specific
- Open recruitment
- CBDA, THCA, CBD, CBGA, CBNA blend
- Numerous botanical oils*
- Check with your physician!

*not epilepsy-friendly; May drug test positive.



THE
POT
LAB
SERVICE. EDUCATION. RESEARCH.

SIGN UP AT BOOTH #833

When to use Raw Cannabinoids?

When pharmaceuticals fail.

“Golden Earth has ***provided significant control of myoclonic seizures*** after seven prescription medications failed to provide control.”



When to use Raw Cannabinoids?

When CBD/THC does not work or is working partially.

“CBD was tried for 8 months with no noticeable change. Golden Earth alone- has shown significant impact in ***decreasing intensity and frequency of seizures.*** We have a while to go with the CBD dosing and the THCa but it certainly hasn't increased her seizure activity.”

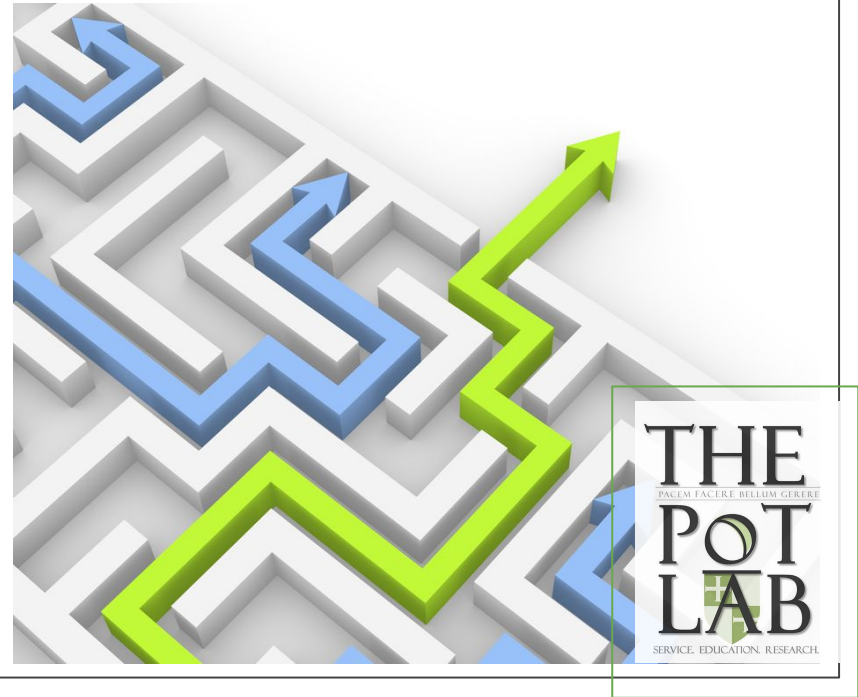


When to use Raw Cannabinoids?

When it is a complex of co-existing conditions.

“My son has a severe seizure disorder with severe episodes of neurological "storming". He has not had these episodes since about 1 week using the thc-a. Absolutely no meds have worked for these episodes. We had tried depakote, phenobarbital, Ativan, clonidine, risperidone. Ritalin. Nothing helped until this. [Raw cannabinoid treatment with Golden Earth XL & Blue Planet).”

.



When to use Raw Cannabinoids?

When you want to foster independence!

“We just started and have noticed a ***great increase in physical activity, attention and mental stabilization.*** It has also ***lessened seizures!***”



THE
POT
LAB
SERVICE. EDUCATION. RESEARCH.

Acknowledgements

THE MEDICAL *CANNABIS* PATIENTS!

Abilities Expo & YOU!

Smart Pharm Research Group & The Pot Lab

Collaborators & Colleagues

More Info

www.SmartPharmResearch.com

www.ThePotLab.com

BEFORE

AFTER



Abilities
EXPO

SPRG
SMART PHARM
RESEARCH GROUP

THE
POT
LAB
SERVICE. EDUCATION. RESEARCH.

Summary

- Major *raw cannabinoids like THCA and CBDA* are readily available in raw hemp/Cannabis
- These molecules **10-20X more effective *per milligram*** than THC or CBD for treating many symptoms.
- Ongoing research shows mixtures suitable for severe & chronic pain.
- Legislation of this plant is illogical, unethical, and just plain MEAN!
- Join us at **Booth #833** for more info!



THANK YOU!

QUESTIONS?

More Info:

www.SmartPharmResearch.com

www.ThePotLab.com



@smartpharmresearch
@thepotlab
@thepotlabLA

BOOTH
#833



SMART PHARM
RESEARCH GROUP

Abilities
EXPO