

Golden Earth & Golden Earth XL

Data and Fact Sheet

[Hemp seed oil and MCT- stabilized suspension of 0.5% THCA (tetrahydrocannabinolic acid) [1.0% for Golden Earth XL] and mint extract]

Composition and Processing:

Golden Earth is processed by vacuum filtration and sonication techniques which are sustainable and non-toxic. Our extraction protocol uses **no petrol-derived chemicals** and all processes are carried out in an eco-friendly manner. Our process is **solvent-free** and there are **no added artificial flavorings or colorings**. All compounds used in our processes are **100% natural, raw and organic certified**.

Recommended Use:

Infants & Toddlers (up to 45 lbs/20 Kg):

0.2 ml in the morning | 0.2 ml after nap time

Children (45 lbs/20 Kg to 95 lbs/44 Kg):

Take 0.5 ml in the morning | 0.5 ml after school/naptime

Adolescents (over 95 lbs/ 44 Kg):

Take 1 ml in the morning | 1ml in the afternoon

Adults (Over 50 Kg):

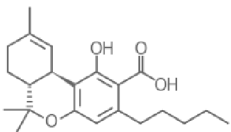
Take 1 ml as needed, throughout the day.

List of Ingredients:

100% Organic & raw ingredients- hemp seed oil, coconut MCT, blended peppermint & spearmint oils with 5 mg/ml THCA enriched hemp extract (0.5% THCA) in Golden Earth, 10mg/ml (1.0% THCA) in Golden Earth XL.

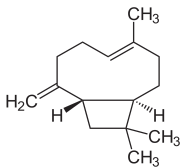
Chemical Structures of Active Ingredients

- ❖ THCA (tetrahydrocannabinolic acid)
[0.5% in Golden Earth; 1.0% in Golden Earth XL]



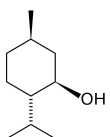
Molecular Formula: C₂₂H₃₀O₄
Molecular Weight: 358.47 g/mol

- ❖ Beta-Caryophyllene [0.1%]



Molecular Formula: C₁₅H₂₄
Molecular Weight: 204.36 g/mol

- ❖ Menthol [0.01%]



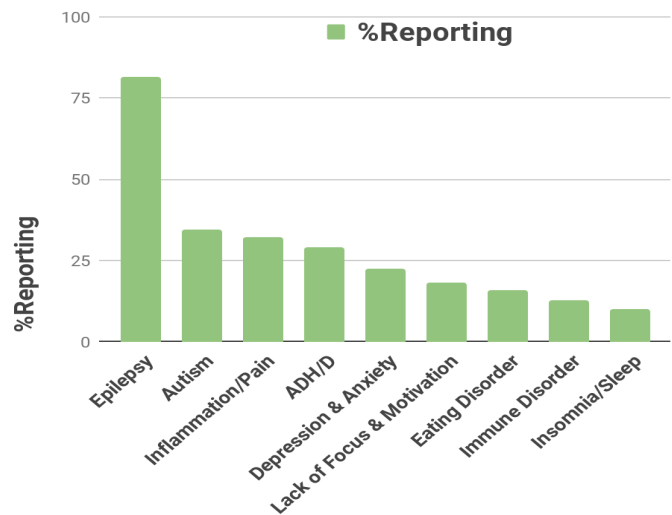
Molecular Formula: C₁₀H₂₀O
Molecular Weight: 156.27 g/mol

Reported Use, Benefits & Side Effects

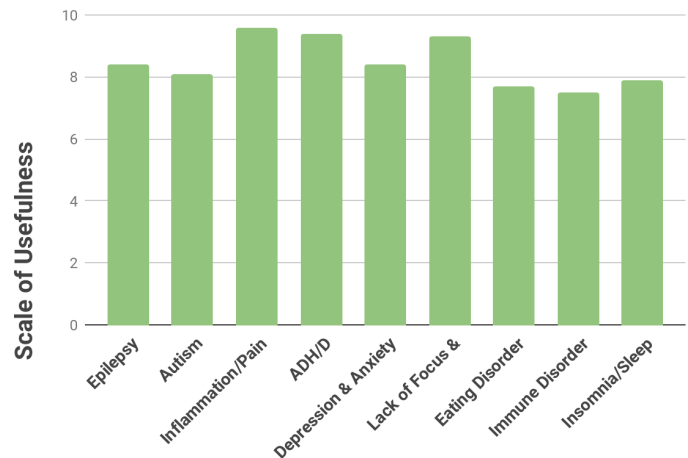
| Study Parameters | |
|----------------------------------|----------------------------|
| Individuals Reporting | |
| Sex | Percentage (%) |
| Female | 60.4 |
| Male | 39.6 |
| Under 18 yrs old | 62.5 |
| Over 18 yrs. old | 37.5 |
| Rare Genetic Disease | 9.5 |
| Average Dose | 0.3 ml |
| Average Frequency | 2-3 X per day |
| Average Daily THCA Intake | 5.2 mg (+/- 0.05 mg/ml) |
| Total Respondents | 178 |

Self- Reported Use and Usefulness

Self Reported Use for Specific Conditions [%]

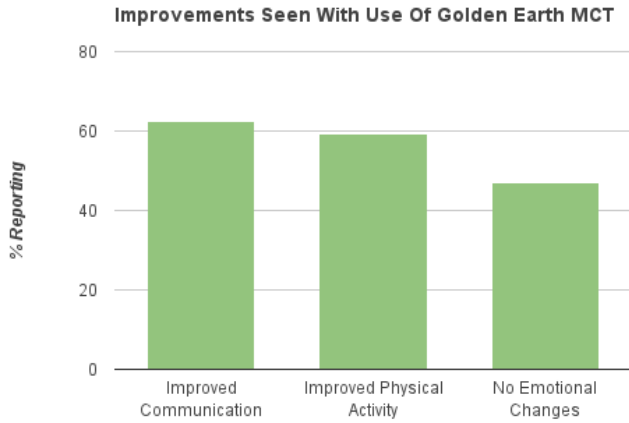


Usefulness for Specific Conditions [1-10 Scale]

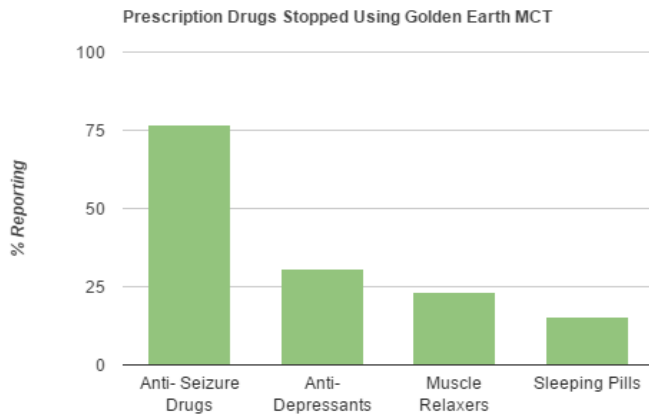


Benefits of Golden Earth MCT

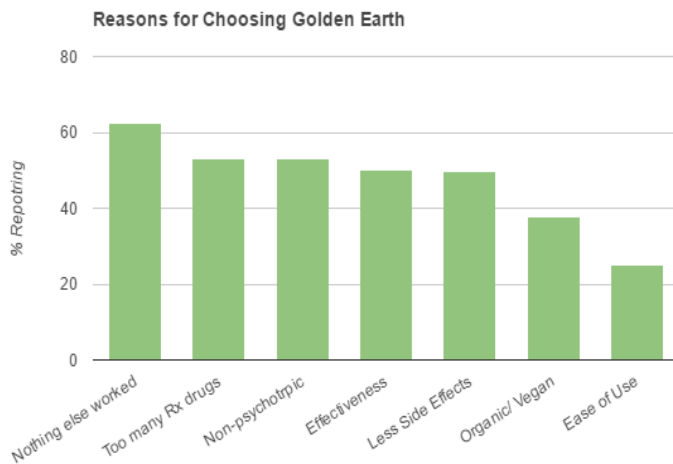
Lifestyle Improvements



Reduction in Medication Dependency



Leading Reasons for Use

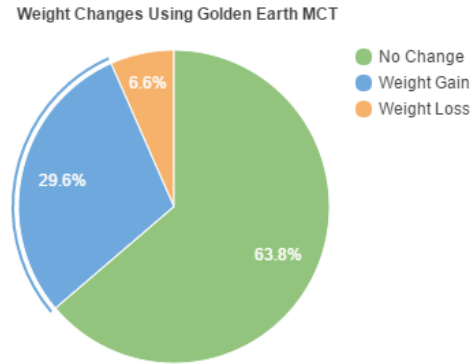


DISCLAIMER

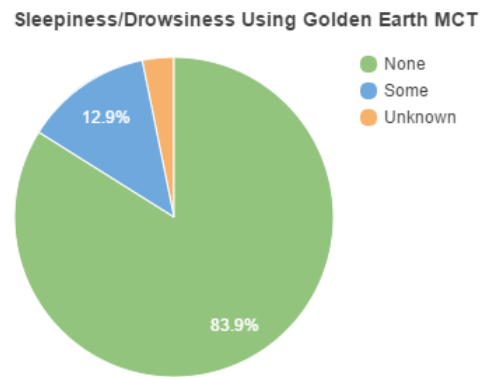
This product has not been tested by the FDA and is not intended to cure any illness, however, a lot of research and testing has been done to ensure you receive a well thought out, and top-of-the-line product.

Side Effects Reported

Effect of Golden Earth MCT on Weight



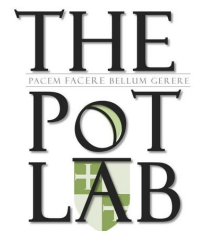
Sleepiness/Drowsiness Side Effects



Formulation Research & Development By The Pot Lab

More information
www.thepotlab.com

1-800-922-4721
ThePotLab@gmail.com



COMPLETELY NATURAL

Premium organic and vegan, cultivated, and curated ingredients. No parabens, phthalates, petrochemicals, chemicals, mineral oil and artificial colors, flavors, or scents.

***CONTAINS NO DETECTABLE THC OR CBD.**